

HOW CAN YOU SHOW KINDNESS?

Like in *Be Kind*, think of ways you could help show kindness in the following situations!

Your elderly neighbor doesn't get many visitors.

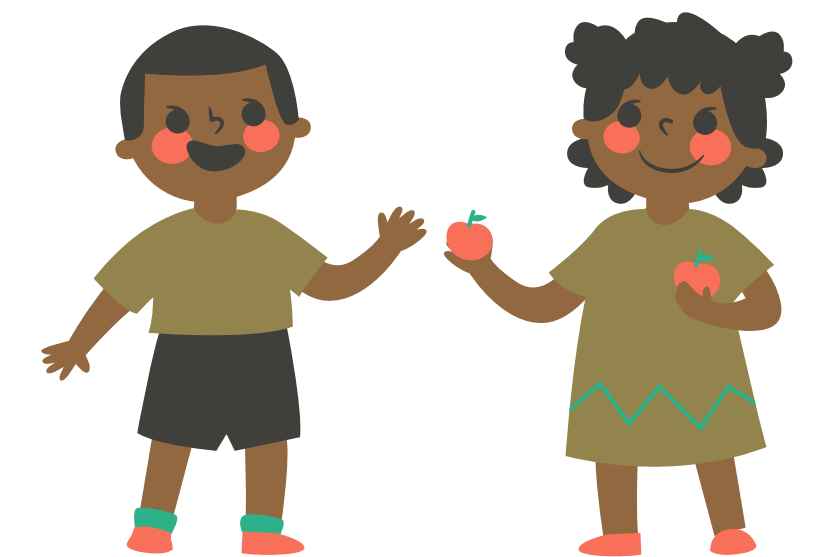
How could you show kindness?

With COVID, how could you help in a socially distant way?

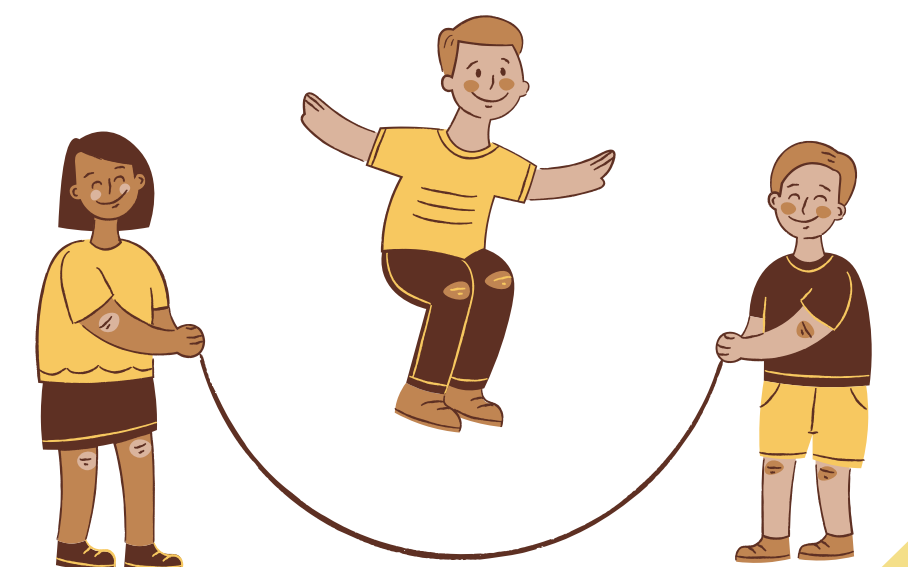


Your classmate Anna forgets her snack for the day.

How could you show kindness?



At recess, you learn to jumprope. You notice your friend seems to be having a hard time learning. How could you show kindness?



HOW CAN YOU SHOW KINDNESS?

It's dress up day for Halloween and you notice some classmates making fun of your classmate Max for his costume. How could you show kindness?



While playing dolls, your friend Sarah tells your other friend Liam that he can't play with you because "boys can't play with dolls". How could you show kindness?



While playing outside, you notice your neighbor fall off their bike. How could you show kindness?

